




PARKS + ATHLETICS

BRINGING NATURE TO PLAY



CARDUCCI
ASSOCIATES

CARDUCCI ASSOCIATES



PROFILE

Founded in 1976, Carducci Associates is a professional landscape architecture and planning firm based in San Francisco and serving a wide range of public and private sector clients throughout California. Emphasizing personal and responsive client service, we work closely with each client during design and construction to devise unique, creative and effective solutions.

VIEWPOINT

We believe no two projects are alike, a conviction we convey through unique site-specific designs. We focus on clients' needs, creating opportunities for interaction between people and nature that result in memorable experiences.

PROFICIENCIES

We conceptualize landscapes that express an artistry and sensitivity to the interaction of social and natural systems. We develop concepts that are purposeful, buildable and sustainable.

We combine creative and technical ability in landscape architecture, planning and urban design with expertise in stormwater management and irrigation, Bay-friendly landscape principles and maintenance practices to conserve water, nurture soils, reduce use of chemicals and comply with stormwater regulations. Our approach creates habitats for birds, bees and other pollinators and beautiful and functional landscapes for people.

We collaborate with clients, other design professionals, multidisciplinary teams and contractors to conceptualize, detail and build complex projects.

We facilitate transparent community engagement processes responsive to the unique requirements of community-driven design that build community support toward a common purpose.

We deliver LEED® certified projects by employing sustainable measures and materials. Our projects provide open space, conserve energy and water, ameliorate the urban-heat island effect, control stormwater runoff, insulate buildings and create outdoor amenities for people.

VALUES

We are committed to the highest standards of social and environmental responsibility and ethical conduct. We provide safe working conditions, treat people with dignity and respect, act fairly and ethically, and use environmentally responsible practices. Our company policies address anti-corruption, anti-human trafficking and anti-slavery.

DRAWING FROM OUR PAST

We draw by hand throughout the design process, using hand drawn sketches and renderings to visualize ideas, develop solutions and collaborate with clients and other design professionals. As a complement to high-tech digital tools, this artistic "soft touch" enables viewers to use their imagination to complete the vision of the sketch. From sketches, we translate our designs into polished digital renderings. By using both analog and digital means, we take the best of the past and modern technology to more effectively design and communicate today.



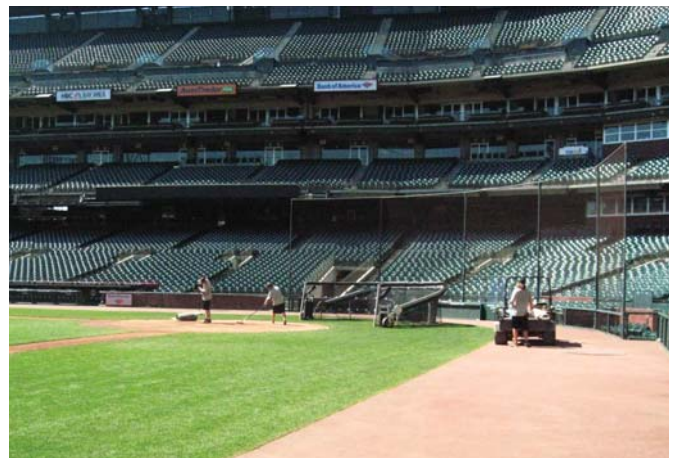
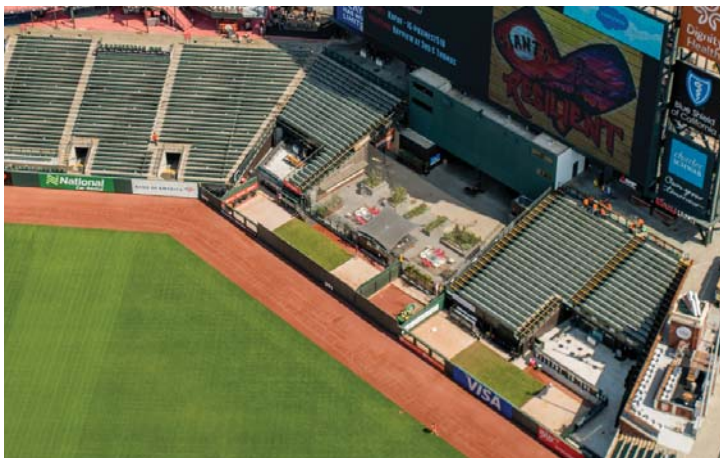


Oracle Park (Formerly AT&T Park)

ORACLE PARK (FORMERLY AT&T PARK)

SAN FRANCISCO, CA

This 2009 renovation of the existing playing field at Oracle Park (formerly AT&T Park) accommodates Major League Baseball play for the San Francisco Giants and facilitates annual renovation from baseball field to football field for use by National Collegiate Athletic Association, United Football League, and others. The design improves both drainage and field irrigation system efficiency so that the field can flexibly sustain the variety of field events (baseball, football, concerts, special events, etc.), conserve water, and be more easily managed. Then in 2019 we were commissioned again to develop drawings and specifications to modify the warning tracks, bullpens, field, subsurface drainage and irrigation related to an extension of the foul ball netting and relocation of home and visitor bullpens from the original location to a safer location behind the home run fence.





Fallon Sports Park

FALLON SPORTS PARK

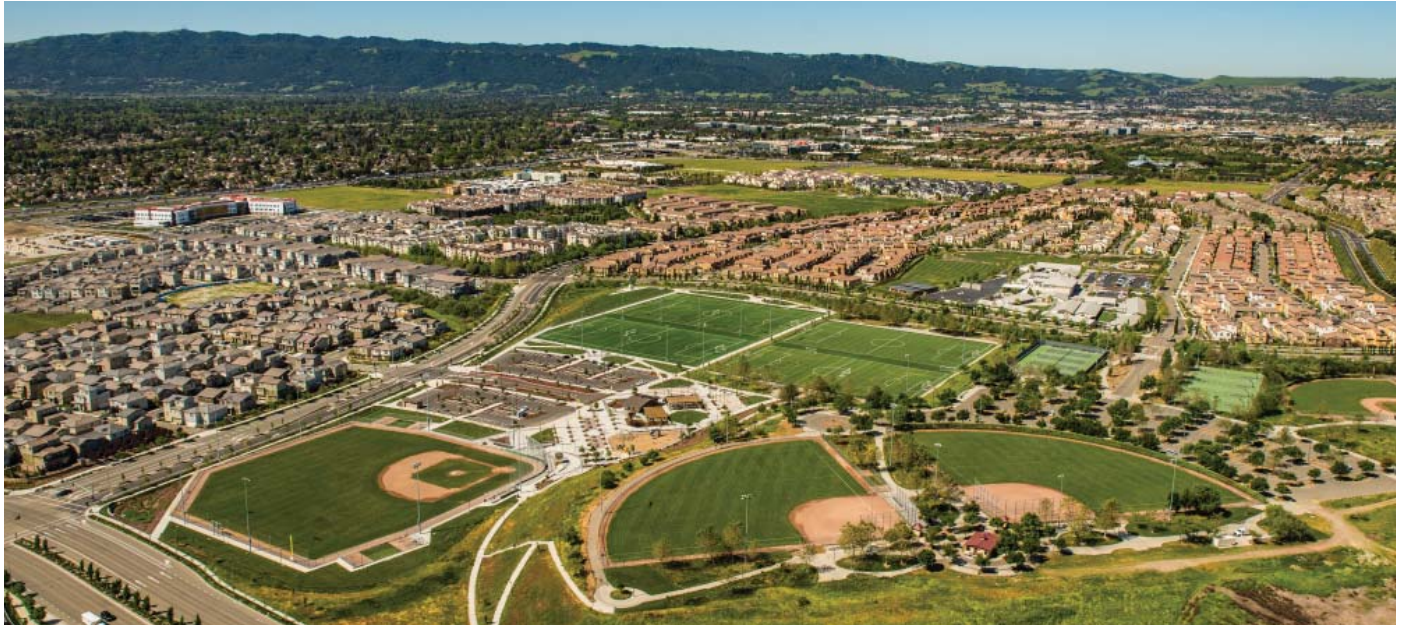
DUBLIN, CA

Utilizing valuable input from local residents, Carducci Associates developed the master plan for this premier sports facility in Dublin, California. The 60-acre park accommodates a number of competition ball fields: a 90-foot lighted baseball diamond, lighted softball and soccer fields, basketball, tennis, and bocce ball courts, and volleyball. Additionally, the park provides its diverse users with a playground and picnic area, BMX course, water play areas, walking paths, and convenient parking. Representing the City of Dublin's sustainability initiatives, the storm drainage system includes bio-swales and bio-basins that allow storm water to be reclaimed for irrigation of lawns and plantings.





Fallon Sports Park





DON BIDDLE COMMUNITY PARK

DUBLIN, CA

Located in the center of the city, Don Biddle Community Park ties together east and west Dublin and provides a rich cultural and recreational experience. It was created as part of a 187-acre land development for 2,000 homes on land that was removed from the Camp Parks military base. Chabot Creek divides the park into the west side and the east side. The west side has a great six-acre unprogrammed lawn, berms, trees, hard courts for basketball and tennis, a restroom, a picnic and neighborhood play area, parking and naturalized open space. The smaller east side of the park has a bronze bust of Don Biddle, a fruit orchard, an outdoor classroom, a community garden, a grove with picnic tables known as the 'Parent Paddock', horseshoe courts, bocce ball courts, hammocks, an adventure playground, a restroom, and features Steven Whyte's 'Crossroads' Veterans Art, which honors the men and women who have served in the U.S. Military at Camp Parks.





Fairmont Terrace Park

FAIRMONT TERRACE PARK

SAN LEANDRO, CA

Carducci Associates was hired by Hayward Area Recreation & Park District (HARD) to provide professional design services and cost estimates for the renovation and expansion of Fairmont Terrace Park. Following the approved Master Plan, park renovations include playgrounds, dog parks, family and group picnic areas, gender-neutral restrooms, water-wise plant areas, ornamental fencing, park signs, accessibility improvements, and open space. Due to its proposed design and programming, the project underwent complex multi-disciplinary reviews and approval processes with the Alameda County Building Department, Oro Loma Sanitary District, East Bay Municipal Water District, and Pacific Gas and Electric. Due to an existing ephemeral creek that traverses the southwest edge of the property, the design considered expanding and enhancing the natural drainage features of the park, to heighten the site's recreational attributes.





Robin Sweeny Park

ROBIN SWEENY PARK

SAUSALITO, CA

The City of Sausalito selected Carducci Associates to renovate Robin Sweeny Park, one of the city's most frequently visited and well-loved parks. Renovations included ADA and playground safety upgrades, a new circulation framework and drainage improvements. Our team analyzed site conditions, conducted public outreach, designed a project web site to engage the community, evaluated input and produced design schemes based upon needs and priorities. The developed scheme received overwhelming public support. Carducci Associates sought to design a truly unique, imaginative, and inclusive nature-based playground that would beautifully and functionally serve the needs of all park users for years to come.





SACRED HEART SCHOOLS

ATHERTON, CA

Sacred Heart Schools hired Carducci Associates to assess synthetic turf options and subsequently, to design a \$5M all-weather athletic facility. The school's new baseball field is now well-equipped with "cool roof" dugouts, canopied practice pitcher mounds for wet weather use, custom steel frame scorekeepers' booth and bleachers, lights, and an audio system for music and game announcements. Adjacent to the field, a "players' lounge" garden is shaded by a mature coast live oak. The site also comprises a soccer/lacrosse field and a softball field with integral anchors designed to secure a 1000-person-capacity tent. An eco-friendly biofiltration system upgrades field drainage. Thoughtful, low-impact design complements the landscape, neighborhood and Atherton community.





Chabot CC Baseball Field

CHABOT COMMUNITY COLLEGE BASEBALL FIELD

HAYWARD, CA

This Design Build Project constructs a new permanent state-of-the-art, baseball field in the present location of the existing baseball field. It is anticipated that the current baseball field orientation will be retained for an optimum playing experience. This is anticipated to be a year-round training and playing field and will promote the Chabot College Gladiator identity and strength.





PRESIDIO WALL PLAYGROUND

SAN FRANCISCO, CA

Carducci Associates worked with the City of San Francisco, Presidio preservation and development groups, playground neighbors and the Helen Diller Family Foundation, to create an accessible playground within the city's historic Presidio. Key elements of our design included respect for the surrounding neighborhood, along with honoring the cultural and natural histories of the Presidio. A sculptural and tactile fountain offers interactive sand and water play for children, encouraging creative development. By opening new avenues of play, the park becomes an active force in creating playtime narratives that help children to socialize, learn, and develop as thinking individuals.





ALDO PINESCHI PARK

ROSEVILLE, CA

This four-acre park serves a residential neighborhood in Roseville, a community that lies within the Sacramento metropolitan area. Curvilinear walkways weave around and through the park, connecting a picnic pavilion, open-air picnic tables, a half court for basketball, children's swing area and a space-themed children's play area. A multi-use turf meadow is frequently used for neighborhood soccer and football games. Bio-swales are integrated into the landscape to remove silt and pollution from surface runoff water.



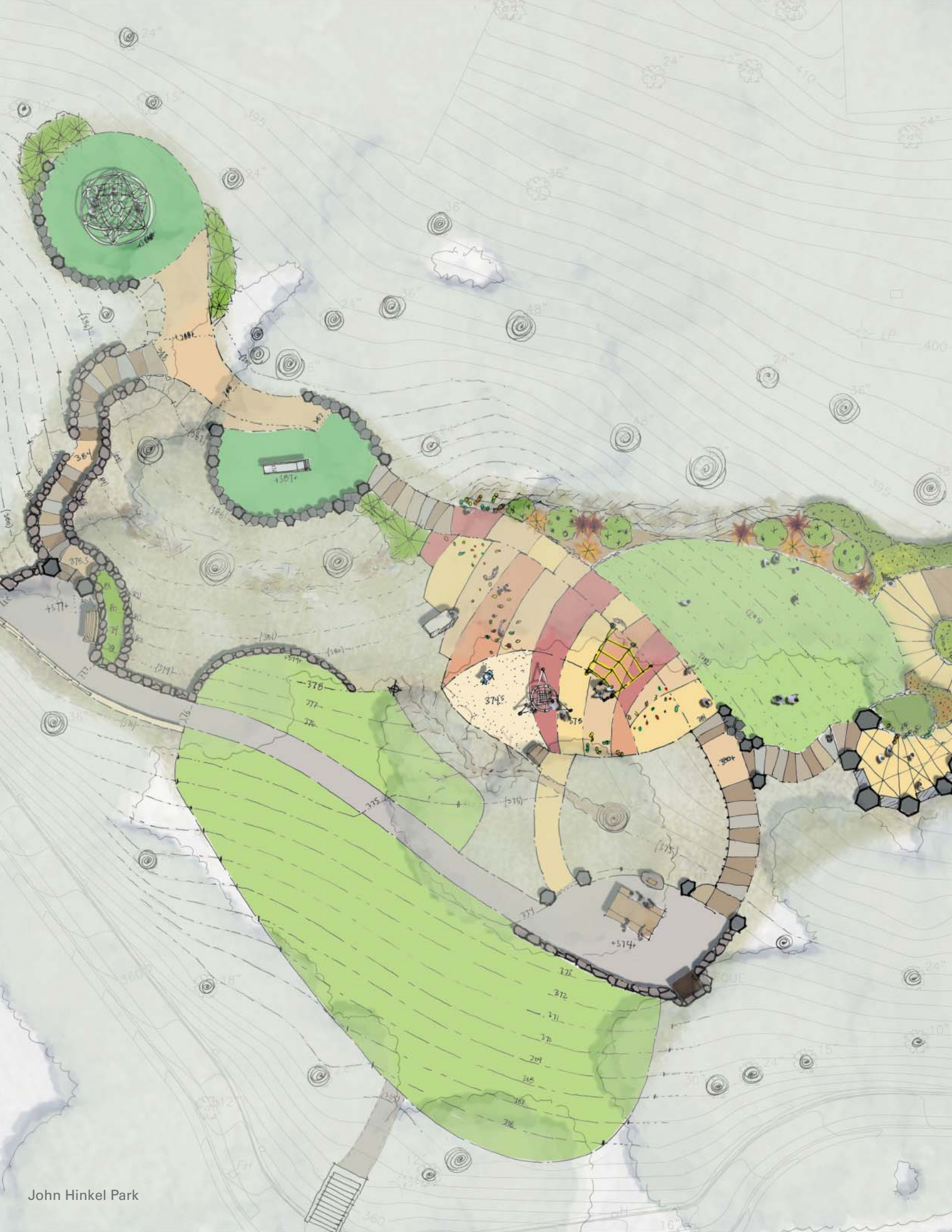


LIFE SCIENCES PARK

SAN FRANCISCO BAY AREA

The Life Sciences Park replaces an existing parking lot of 739 parking stalls with a new private park to function as a landscaped outdoor amenity and gathering space on a +5-acre site. Included is a covered presentation stage, partially covered amphitheater-style seating, trellised central gathering space, event promenade, outdoor site furniture, ancillary surface parking, and water-efficient and native landscaping, with recreational turf, groves of trees, and thematic gardens. The site will primarily serve on-campus employees, with a limited number of visitors for special events and gatherings. Taking cues from natural places near the site, the landscape design includes plant communities that complement the program and enhance ecological functions, including plants adapted to salty, windy and poorly drained soils, and provide a durable, water conserving, low maintenance palette for the project.





John Hinkel Park

JOHN HINKEL PARK

BERKELEY, CA

Set within a North Berkeley neighborhood of large homes and leafy, narrow streets, John Hinkel Park is a 4-acre hillside park of steep, rocky slopes blanketed with ancient oak groves. Carducci Associates worked with the City of Berkeley to replace an historic building destroyed by fire with new picnic areas built using reclaimed lumber and native rock. Our team also renovated picnic and play areas damaged by time and weather. Despite competing interests, Carducci Associates was able to guide the community to a design that conforms to Landmark status constraints, complies with ADA requirements, and introduces children to the beauty of California's oak woodlands.





THE WAVE AT EMERALD GLEN PARK

DUBLIN, CA

The “jewel” of the Dublin Park System, Emerald Glen Park was designed and constructed over four phases to enhance public space as the community grew. Carducci Associates participated in three phases of development for this pristine 50-acre site, including the final phase and the park’s centerpiece: an indoor/outdoor aquatic center, a plaza featuring public art, and an amphitheater for year-round concerts. This LEED® Silver project provides Dublin residents with passive recreation space, a weekly farmer’s market, and one of the East Bay’s finest community aquatic centers.



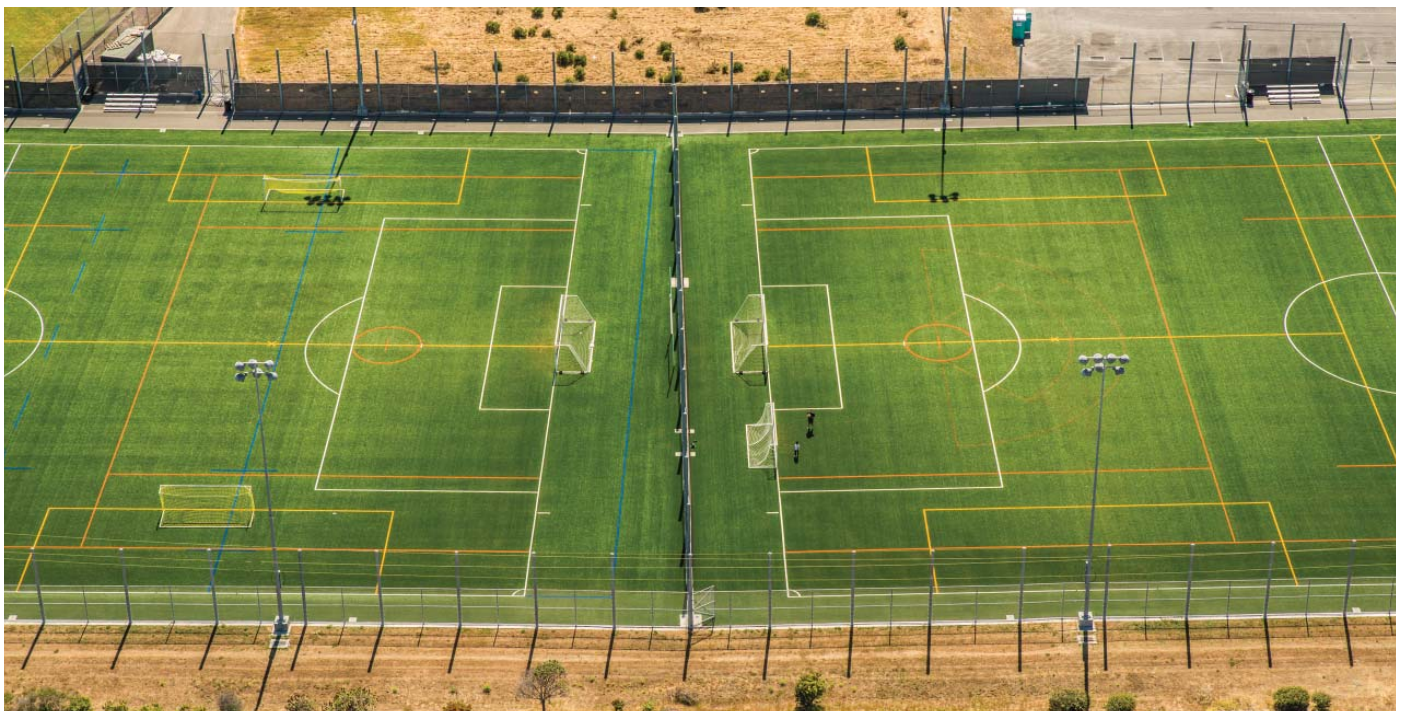


Tom Bates Regional Sports Complex

TOM BATES REGIONAL SPORTS COMPLEX

BERKELEY, CA

This synthetic turf fields complex is considered the most highly used athletic fields facility in Northern California, with approximately 300,000 player hours per year recorded. When it came time for the City of Berkeley to replace the synthetic turf, the City approached Carducci Associates for our synthetic turf and infill knowledge, community engagement successes, and as subject matter experts to help the community and the Joint Powers Agreement (JPA) stakeholder cities understand the project complexities. Carducci Associates led the community engagement process, studied and recommended replacement turf system options, provided cost analyses for installation and life-cycle costs, and helped craft technical memos from the City of Berkeley to the other JPA stakeholder cities.





San Marin High School Athletic Fields

SAN MARIN HIGH SCHOOL ATHLETIC FIELDS

NOVATO, CA

In partnership with Novato Unified School District, Carducci Associates spearheaded the renovation project at San Marin High School, encompassing the track and field, as well as enhancements to the baseball and softball fields. The upgrades included new chain link fabric sideline and outfield fencing, backstops, dugouts, and bullpens for the baseball and softball fields. Additionally, the football field underwent a transformation with the installation of bleachers, electrical for sports lighting, and a synthetic field suitable for football, soccer, and related sports. Surrounding the field is an eight-lane, 400-meter all-weather track. These enhancements prioritize ADA access, enhance student/player safety, reduce injuries, and ensure year-round utilization for both students and the community.





SONOMA VALLEY HIGH SCHOOL MASTER PLAN

SONOMA, CA

Carducci Associates was commissioned with completing an overall masterplan for the campus and the first phase consisted of renovating the field with a new lighted field and track, providing new baseball and softball fields, creating ADA parking, and providing a large bio basin for storm water detention and filtration. These improvements improved drainage and has been widely received as a recreational asset to the community.





Sunset Futsal Courts

SUNSET FUTSAL COURTS

HAYWARD, CA

Carducci Associates was selected by Hayward Area Recreation and Parks District (HARD) for designing and cost estimating the proposed Sunset Futsal Courts. The project is composed of a common area connecting the courts which contains a shade structure over picnic tables, 3 tier bleachers for spectators, a restroom structure containing two gender neutral private bathrooms and a drinking fountain with bottle and jug fillers. The overall site is symmetrical, housing two senior courts, one on each side of the common area. These larger courts in turn may be divided with a portable partition, creating a total of four junior courts. Now completed, this project has generated enthusiasm within the community and is already in active use. Notably, it stands as the first futsal court area of its kind in the Hayward region.





Mills High School

MILLS HIGH SCHOOL

MILLBRAE, CA

Working with a team of civil, structural and electrical engineers, Carducci Associates renovated the baseball, softball, and multipurpose natural turf fields to synthetic turf in order to minimize water use, extend field use and access and to also provide nighttime use of the fields for the school and surrounding community. New tennis courts were constructed and new light poles were installed at the swimming pool to extend the use of the fields and courts. New concrete tiered seating offers an integrated viewing experience for visitors, with new press boxes to enhance game enjoyment. Carducci Associates worked closely with the San Francisco Public Utilities Commission to coordinate design and construction that accommodated the Hetch Hetchy water supply infrastructure that runs beneath portions of this site.



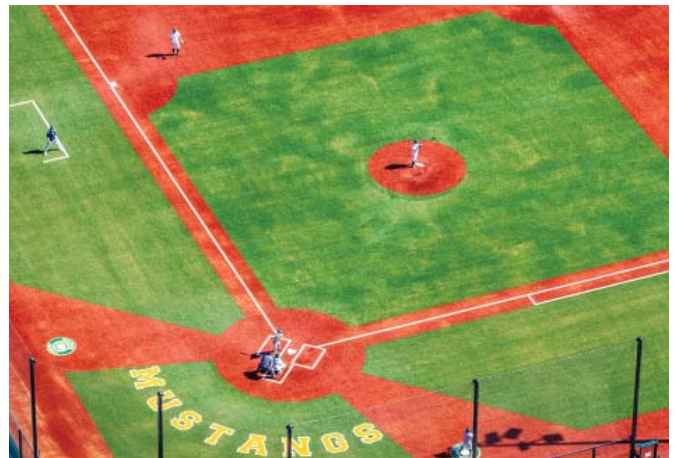


Capuchino High School

CAPUCHINO HIGH SCHOOL

SAN BRUNO, CA

The Capuchino High School Athletic Complex project is a complete renovation of existing outdoor athletic facilities and environs. Several fields have been converted from natural turf to synthetic turf with environmentally friendly and safer infill, such as cork. Baseball and softball fields, tennis courts and a multipurpose field have all been renovated. Integral to the project was the relocation of several established mature trees as well as the planting of new trees to contribute to the area's urban forest canopy, as well as the installation of water detention basins to treat and mitigate the impacts of stormwater runoff. Other renovations include improvements to accessible routes of travel and all furnishings to accommodate access for all users and visitors of the athletic grounds.





Life Sciences Park

“Your firm is about the only one I’ve worked with that always responds and always follows-through.”

-Project Manager, City of Novato

VINCENT LATTANZIO

Principal
415 447 5214 (D)
415 377 8836 (M)
vince@carducciassociates.com

WILLIAM FEE

Principal
415 447 5215 (D)
bill@carducciassociates.com

JIN KIM

Principal
415 447 5225 (D)
jin@carducciassociates.com



CARDUCCI
ASSOCIATES

555 BEACH STREET FOURTH FLOOR
SAN FRANCISCO CA 94133
415 674 0990
info@carducciassociates.com
www.carducciassociates.com

